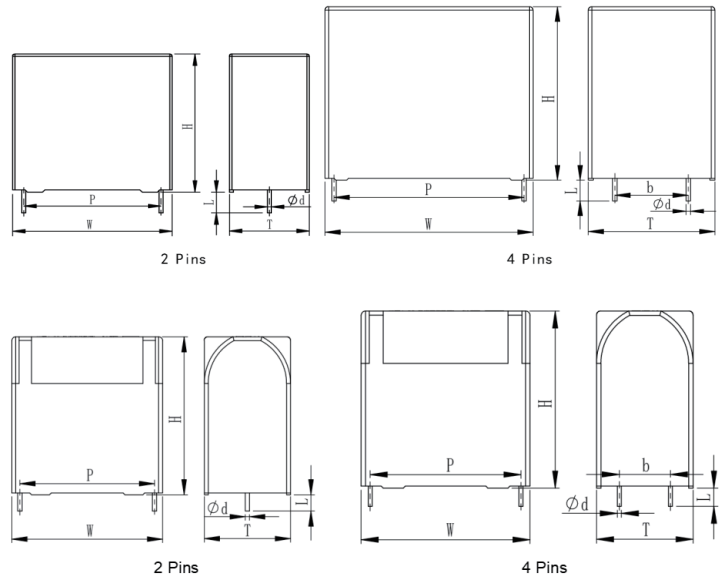
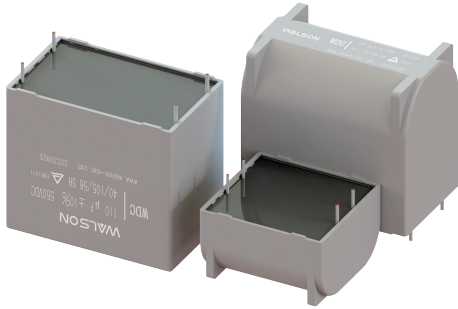


WDC PCB用DC-Link电容器

DC-Link Capacitor for PCB

外形图 Outline Drawing



单位 Unit: mm

特点 Features

- 金属化聚丙烯膜结构
- 良好的电气性能
- 阻燃塑料外壳和环氧树脂封装 (UL94-0)，镀锡铜线引出
- E.S.R.低、高耐电流能力、使用寿命长、故障率低
- Metallized polypropylene film
- Good electric property and high reliability
- Flame-resistant plastic case and epoxy resin (UL94 V-0, Non PCB) sealing, tinned copper terminals lead out
- Low E.S.R., high current withstand capability, long service lifetime and low failure rate

主要用途 Typical Applications

- 高性能直流滤波应用场合，如变频器、工业和高端电源、风能或太阳能逆变器、UPS、感应加热设备、焊接设备等
- Used in high performance DC-filter applications for DC-link, energy storage and filtering. Widely used for industrial and high-end power supplies, wind-power or solar-power inverters, UPS, induction heating equipment, welding equipment, etc.

技术要求 Specifications

引用标准 Reference Standard	GB/T 17702 (IEC 61071)
工作温度 Operating temperature	-40~105°C (+85°C to +105°C: decreasing factor 1.35% per °C for U_N , 85°C)
额定电压 Rated Voltage	500~2000 V.dc
容量偏差 Capacitance Tolerance	J (± 5%), K (± 10%)
耐电压 Voltage Proof	1.5 U_N (10s)
自感 Self Inductance	< 1 nH per mm of lead pitch
绝缘电阻 R_{ins} Insulation Resistance	≥ 10,000s (20°C, 100V, 1 min)
预期寿命 t_{EL} Expected Lifetime	100,000h @ U_N , $\theta_{rs}=70^\circ\text{C}$
阻燃性 Flame Retardation	UL 94V-0

■ 外形尺寸 Dimensions (mm)

U _{N, 85°C} =500Vdc											
C _N (μF)	W ± 1.0 (mm)	H ± 1.0 (mm)	T ± 1.0 (mm)	P ± 0.5 (mm)	b ± 0.5 (mm)	d ± 0.05 (mm)	dV/dt (V/μs)	tan δ (10 ⁻⁴)		R _{esr} @10kHz (mΩ)	I _{max} (A)
								1kHz	10kHz		
5.0	32.0	20.0	11.0	27.5	-	0.8	65	10	100	8.5	5.0
10.0	32.0	28.0	14.0	27.5	-	0.8	65	10	100	7.5	6.5
22.0	32.0	37.0	22.0	27.5	-	0.8	65	10	100	5.0	10.0
30.0	42.0	40.0	20.0	37.5	10.2	1.0	30	15	150	8.0	12.5
35.0	42.0	37.0	22.0	37.5	10.2	1.0	30	15	150	8.0	13.5
40.0	42.0	44.0	24.0	37.5	10.2	1.0	30	15	150	5.0	14.5
50.0	42.0	45.0	30.0	37.5	20.3	1.2	30	15	150	4.0	16.0
60.0	42.0	45.0	30.0	37.5	20.3	1.2	30	15	150	3.0	16.5
75.0	57.5	45.0	30.0	52.5	20.3	1.2	15	35	350	5.5	16.0
80.0	57.5	45.0	30.0	52.5	20.3	1.2	15	35	350	5.0	16.5
100.0	57.5	50.0	35.0	52.5	20.3	1.2	15	35	350	4.0	18.0
110.0	57.5	50.0	35.0	52.5	20.3	1.2	15	35	350	4.0	19.0

U _{N, 85°C} =600Vdc											
C _N (μF)	W ± 1.0 (mm)	H ± 1.0 (mm)	T ± 1.0 (mm)	P ± 0.5 (mm)	b ± 0.5 (mm)	d ± 0.05 (mm)	dV/dt (V/μs)	tan δ (10 ⁻⁴)		R _{esr} @10kHz (mΩ)	I _{max} (A)
								1kHz	10kHz		
2.0	32.0	18.0	9.0	27.5	-	0.8	65	11	100	47.8	2.8
3.0	32.0	20.0	11.0	27.5	-	0.8	65	11	100	31.8	4.1
4.0	32.0	20.0	11.0	27.5	-	0.8	65	11	100	23.9	5.5
5.0	32.0	22.0	13.0	27.5	-	0.8	65	11	100	19.1	6.9
6.0	32.0	25.0	14.0	27.5	-	0.8	65	11	100	18.6	7.1
7.0	32.0	28.0	14.0	27.5	-	0.8	65	11	100	15.9	8.3
8.0	32.0	28.0	14.0	27.5	-	0.8	65	11	100	139.0	9.5
9.0	32.0	28.0	18.0	27.5	-	0.8	65	11	100	12.4	10.7
10.0	32.0	30.0	16.0	27.5	-	0.8	65	11	100	11.1	11.0
10.0	32.0	30.0	18.0	27.5	-	0.8	65	11	100	11.1	11.0
12.0	32.0	33.0	18.0	27.5	-	0.8	65	11	100	10.8	12.0
15.0	32.0	37.0	22.0	27.5	-	0.8	65	11	100	9.0	12.0
15.0	32.0	37.0	22.0	27.5	10.2	0.8	65	11	100	7.4	16.5
18.0	32.0	37.0	22.0	27.5	-	0.8	65	11	100	8.0	12.0
18.0	32.0	37.0	22.0	27.5	10.2	0.8	65	11	100	6.2	17.0
10.0	41.5	30.0	16.0	37.5	-	1.0	30	20	175	19.5	6.2
12.0	41.5	30.0	16.0	37.5	-	1.0	30	20	175	16.3	7.4
15.0	41.5	34.0	19.0	37.5	-	1.0	30	20	175	13.0	9.2
20.0	42.0	40.0	20.0	37.5	10.2	1.0	30	20	175	9.8	12.3

■ 外形尺寸 Dimensions (mm)

U _{N, 85°C} =600Vdc											
C _N (μF)	W±1.0 (mm)	H±1.0 (mm)	T±1.0 (mm)	P±0.5 (mm)	b±0.5 (mm)	d±0.05 (mm)	dV/dt (V/μs)	tan δ (10 ⁻⁴)		R _{esr} @10kHz (mΩ)	I _{max} (A)
								1kHz	10kHz		
22.0	42.0	40.0	20.0	37.5	10.2	1.0	30	20	175	8.9	13.5
25.0	42.0	40.0	20.0	37.5	10.2	1.0	30	20	175	7.8	15.4
30.0	42.0	44.0	24.0	37.5	10.2	1.0	30	20	175	6.8	17.5
35.0	42.0	45.0	30.0	37.5	20.3	1.2	30	20	175	6.0	20.1
40.0	42.0	45.0	30.0	37.5	20.3	1.2	30	20	175	5.2	23.0
45.0	42.0	50.0	35.0	37.5	20.3	1.2	30	20	175	4.6	25.8
50.0	42.0	50.0	35.0	37.5	20.3	1.2	30	20	175	4.2	28.7
55.0	42.0	50.0	35.0	37.5	20.3	1.2	30	20	175	3.8	31.6
60.0	42.0	55.0	40.0	37.5	20.3	1.2	30	20	175	3.5	34.5
65.0	42.0	55.0	40.0	37.5	20.3	1.2	30	20	175	3.2	35.0
70.0	42.0	55.0	40.0	37.5	20.3	1.2	30	20	175	3.0	35.0
75.0	42.0	60.0	45.0	37.5	20.3	1.2	30	20	175	2.8	35.0
80.0	42.0	60.0	45.0	37.5	20.3	1.2	30	20	175	2.6	35.0
85.0	42.0	60.0	45.0	37.5	20.3	1.2	30	20	175	2.5	35.0
55.0	57.5	45.0	30.0	52.5	20.3	1.2	15	36	350	7.1	16.9
60.0	57.5	45.0	30.0	52.5	20.3	1.2	15	36	350	6.5	18.5
65.0	57.5	50.0	35.0	52.5	20.3	1.2	15	36	350	6.0	20.0
70.0	57.5	50.0	35.0	52.5	20.3	1.2	15	36	350	5.6	21.5
75.0	57.5	50.0	35.0	52.5	20.3	1.2	15	36	350	5.2	23.1
80.0	57.5	50.0	35.0	52.5	20.3	1.2	15	36	350	4.9	24.6
85.0	57.5	55.0	45.0	52.5	20.3	1.2	15	36	350	4.8	25.1
90.0	57.5	55.0	45.0	52.5	20.3	1.2	15	36	350	4.6	25.8
95.0	57.5	55.0	45.0	52.5	20.3	1.2	15	36	350	4.4	27.3
100.0	57.5	55.0	45.0	52.5	20.3	1.2	15	36	350	4.2	28.7
110.0	57.5	55.0	45.0	52.5	20.3	1.2	15	36	350	3.8	31.6
110.0	57.5	55.0	45.0	52.5	20.3	1.2	15	36	350	3.8	31.6
120.0	57.5	65.0	45.0	52.5	20.3	1.2	15	36	350	3.5	34.5
130.0	57.5	65.0	45.0	52.5	20.3	1.2	15	36	350	3.2	35.0
140.0	57.5	65.0	45.0	52.5	20.3	1.2	15	36	350	3.0	35.0

U _{N, 85°C} =800Vdc											
C _N (μF)	W±1.0 (mm)	H±1.0 (mm)	T±1.0 (mm)	P±0.5 (mm)	b±0.5 (mm)	d±0.05 (mm)	dV/dt (V/μs)	tan δ (10 ⁻⁴)		R _{esr} @10kHz (mΩ)	I _{max} (A)
								1kHz	10kHz		
2.0	32.0	18.0	9.0	27.5	-	0.8	65	10	95	45.4	2.9
3.0	32.0	20.0	11.0	27.5	-	0.8	65	10	95	30.3	4.4
3.3	32.0	22.0	13.0	27.5	-	0.8	65	10	95	18.8	7.0
4.0	32.0	28.0	14.0	27.5	-	0.8	65	10	95	22.7	5.8
5.0	32.0	28.0	14.0	27.5	-	0.8	65	10	95	18.2	7.3
6.0	32.0	30.0	18.0	27.5	-	0.8	65	10	95	15.1	8.7
7.0	32.0	30.0	18.0	27.5	-	0.8	65	10	95	13.0	10.2
8.0	32.0	33.0	18.0	27.5	-	0.8	65	10	95	12.5	10.5

■ 外形尺寸 Dimensions (mm)

U _{N, 85°C} =800Vdc											
C _N (μF)	W±1.0 (mm)	H±1.0 (mm)	T±1.0 (mm)	P±0.5 (mm)	b±0.5 (mm)	d±0.05 (mm)	dV/dt (V/μs)	tan δ (10 ⁻⁴)		R _{esr} @10kHz (mΩ)	I _{max} (A)
								1kHz	10kHz		
9.0	32.0	33.0	18.0	27.5	-	0.8	65	10	95	11.1	11.8
10.0	32.0	37.0	22.0	27.5	-	0.8	65	10	95	11.0	12.0
10.0	32.0	37.0	22.0	27.5	10.2	0.8	65	10	95	9.1	14.5
11.0	32.0	37.0	22.0	27.5	-	0.8	65	10	95	10.0	12.0
11.0	32.0	37.0	22.0	27.5	10.2	0.8	65	10	95	8.3	16.0
12.0	32.0	37.0	22.0	27.5	-	0.8	65	10	95	9.3	12.0
12.0	32.0	37.0	22.0	27.5	10.2	0.8	65	10	95	7.6	16.0
13.0	32.0	37.0	22.0	27.5	-	0.8	30	10	95	8.8	12.0
13.0	32.0	37.0	22.0	27.5	10.2	0.8	30	10	95	8.1	16.2
14.0	32.0	37.0	22.0	27.5	-	0.8	30	10	95	8.2	12.0
14.0	32.0	37.0	22.0	27.5	10.2	0.8	30	10	95	7.6	16.5
8.0	41.5	30.0	16.0	37.5	-	1.0	30	18	160	22.3	5.4
9.0	41.5	30.0	16.0	37.5	-	1.0	30	18	160	19.8	6.1
10.0	41.5	34.0	19.0	37.5	-	1.0	30	18	160	17.8	6.7
12.0	41.5	34.0	19.0	37.5	-	1.0	30	18	160	14.9	8.1
15.0	42.0	40.0	20.0	37.5	10.2	1.0	30	18	160	11.9	10.1
20.0	42.0	44.0	24.0	37.5	10.2	1.0	30	18	160	8.9	13.5
25.0	42.0	44.0	24.0	37.5	10.2	1.0	30	18	160	7.1	16.8
30.0	42.0	45.0	30.0	37.5	20.3	1.2	30	18	160	5.9	20.2
35.0	42.0	50.0	35.0	37.5	20.3	1.2	30	18	160	5.5	22.0
40.0	42.0	50.0	35.0	37.5	20.3	1.2	30	18	160	4.8	25.1
45.0	42.0	55.0	40.0	37.5	20.3	1.2	30	18	160	4.2	28.3
50.0	42.0	55.0	40.0	37.5	20.3	1.2	30	18	160	3.8	31.4
55.0	42.0	60.0	45.0	37.5	20.3	1.2	15	18	160	3.5	34.5
60.0	42.0	60.0	45.0	37.5	20.3	1.2	15	18	160	3.2	35.0
65.0	42.0	60.0	45.0	37.5	20.3	1.2	15	18	160	2.9	35.0
40.0	57.5	45.0	30.0	52.5	20.3	1.2	15	33	320	8.9	13.5
45.0	57.5	45.0	30.0	52.5	20.3	1.2	15	33	320	7.9	15.1
50.0	57.5	50.0	35.0	52.5	20.3	1.2	15	33	320	7.1	16.8
55.0	57.5	50.0	35.0	52.5	20.3	1.2	15	33	320	6.5	18.5
60.0	57.5	50.0	35.0	52.5	20.3	1.2	15	33	320	5.9	20.2
65.0	57.5	55.0	45.0	52.5	20.3	1.2	15	33	320	5.5	21.9
70.0	57.5	55.0	45.0	52.5	20.3	1.2	15	33	320	5.1	23.6
75.0	57.5	55.0	45.0	52.5	20.3	1.2	15	33	320	4.8	25.2
80.0	57.5	55.0	45.0	52.5	20.3	1.2	15	33	320	4.6	25.9
85.0	57.5	55.0	45.0	52.5	20.3	1.2	15	33	320	4.5	26.7
90.0	57.5	55.0	45.0	52.5	20.3	1.2	15	33	320	4.2	28.3
95.0	57.5	65.0	45.0	52.5	20.3	1.2	15	33	320	4.0	29.8
100.0	57.5	65.0	45.0	52.5	20.3	1.2	15	33	320	3.8	31.4
110.0	57.5	65.0	45.0	52.5	20.3	1.2	15	33	320	3.5	34.5

■ 外形尺寸 Dimensions (mm)

U _{N, 85°C} =900Vdc											
C _N (μF)	W±1.0 (mm)	H±1.0 (mm)	T±1.0 (mm)	P±0.5 (mm)	b±0.5 (mm)	d±0.05 (mm)	dV/dt (V/μs)	tan δ (10 ⁻⁴)		R _{esr} @10kHz (mΩ)	I _{max} (A)
								1kHz	10kHz		
1.0	32.0	18.0	9.0	27.5	-	0.8	70	9	90	45.4	2.9
2.0	32.0	20.0	11.0	27.5	-	0.8	70	9	90	30.3	4.4
3.0	32.0	22.0	13.0	27.5	-	0.8	70	9	90	18.8	7.0
4.0	32.0	28.0	14.0	27.5	-	0.8	70	9	90	22.7	5.8
5.0	32.0	28.0	18.0	27.5	-	0.8	70	9	90	18.2	7.3
6.0	32.0	33.0	18.0	27.5	-	0.8	70	9	90	15.1	8.7
7.0	32.0	33.0	18.0	27.5	-	0.8	70	9	90	13.0	10.2
8.0	32.0	37.0	22.0	27.5	-	0.8	70	9	90	12.5	10.5
8.0	32.0	37.0	22.0	27.5	10.2	0.8	70	9	90	11.1	11.8
9.0	32.0	37.0	22.0	27.5	-	0.8	70	9	90	11.0	12.0
9.0	32.0	37.0	22.0	27.5	10.2	0.8	70	9	90	9.1	14.5
10.0	32.0	37.0	22.0	27.5	-	0.8	70	9	90	10.0	12.0
10.0	32.0	37.0	22.0	27.5	10.2	0.8	70	9	90	8.3	16.0
4.7	41.5	30.0	16.0	27.5	-	1.0	70	17	150	9.3	12.0
5.0	41.5	30.0	16.0	27.5	10.2	1.0	70	17	150	7.6	16.0
6.0	41.5	30.0	16.0	27.5	-	1.0	70	17	150	8.8	12.0
7.0	41.5	30.0	16.0	27.5	10.2	1.0	70	17	150	8.1	16.2
8.0	41.0	34.0	19.0	27.5	-	1.0	70	17	150	8.2	12.0
10.0	42.0	40.0	20.0	27.5	10.2	1.0	70	17	150	7.6	16.5
12.0	42.0	37.0	22.0	37.5	10.2	1.0	35	17	150	22.3	5.4
15.0	42.0	44.0	24.0	37.5	10.2	1.0	35	17	150	19.8	6.1
18.0	42.0	44.0	24.0	37.5	10.2	1.0	35	17	150	17.8	6.7
20.0	42.0	44.0	24.0	37.5	10.2	1.0	35	17	150	14.9	8.1
25.0	42.0	45.0	30.0	37.5	20.3	1.2	35	17	150	8.9	13.5
30.0	42.0	50.0	35.0	37.5	20.3	1.2	35	17	150	7.1	16.8
35.0	42.0	55.0	40.0	37.5	20.3	1.2	35	17	150	5.9	20.2
40.0	42.0	55.0	40.0	37.5	20.3	1.2	35	17	150	5.5	22.0
45.0	42.0	60.0	45.0	37.5	20.3	1.2	35	17	150	4.8	25.1
50.0	42.0	60.0	45.0	37.5	20.3	1.2	35	17	150	4.2	28.3
30.0	57.5	45.0	30.0	52.5	20.3	1.2	15	31	300	8.9	13.5
35.0	57.5	45.0	30.0	52.5	20.3	1.2	15	31	300	7.1	16.8
40.0	57.5	50.0	35.0	52.5	20.3	1.2	15	31	300	6.5	18.5

■ 外形尺寸 Dimensions (mm)

U _{N, 85°C} =1000Vdc											
C _N (μF)	W±1.0 (mm)	H±1.0 (mm)	T±1.0 (mm)	P±0.5 (mm)	b±0.5 (mm)	d±0.05 (mm)	dV/dt (V/μs)	tan δ (10 ⁻⁴)		R _{ESR} @10kHz (mΩ)	I _{max} (A)
								1kHz	10kHz		
1.0	32.0	18.0	9.0	27.5	-	0.8	75	8	80	76.4	1.7
2.0	32.0	22.0	13.0	27.5	-	0.8	75	8	80	38.2	3.5
3.0	32.0	28.0	14.0	27.5	-	0.8	75	8	80	25.5	5.2
4.0	32.0	30.0	18.0	27.5	-	0.8	75	8	80	19.1	6.9
5.0	32.0	33.0	18.0	27.5	-	0.8	75	8	80	15.3	8.6
6.0	32.0	33.0	18.0	27.5	-	0.8	75	8	80	14.9	8.9
7.0	32.0	37.0	22.0	27.5	-	0.8	75	8	80	14.5	9.4
7.0	32.0	37.0	22.0	27.5	10.2	0.8	75	8	80	11.4	11.6
8.0	32.0	37.0	22.0	27.5	-	0.8	75	8	80	13.0	10.8
8.0	32.0	37.0	22.0	27.5	10.2	0.8	75	8	80	10.0	13.3
5.0	41.5	30.0	16.0	27.5	-	1.0	75	8	80	31.2	3.8
6.0	41.5	30.0	16.0	27.5	-	1.0	75	8	80	26.0	4.6
7.0	41.5	35.0	19.0	27.5	-	1.0	75	8	80	22.3	5.4
8.0	41.5	34.0	19.0	37.5	-	1.0	37	15	140	19.5	6.2
10.0	42.0	40.0	20.0	37.5	-	1.0	37	15	140	15.6	6.7
10.0	42.0	40.0	20.0	37.5	10.2	1.0	37	15	140	15.6	7.7
12.0	42.0	37.0	22.0	37.5	-	1.0	37	15	140	13.0	9.2
12.0	42.0	37.0	22.0	37.5	10.2	1.0	37	15	140	15.0	8.0
15.0	42.0	44.0	24.0	37.5	10.2	1.0	37	15	140	10.4	11.5
18.0	42.0	45.0	30.0	37.5	20.3	1.2	37	15	140	8.7	13.8
20.0	42.0	45.0	30.0	37.5	20.3	1.2	37	15	140	7.8	15.4
25.0	42.0	50.0	35.0	37.5	20.3	1.2	37	15	140	6.2	19.2
30.0	42.0	55.0	40.0	37.5	20.3	1.2	37	15	140	5.2	23.1
35.0	42.0	55.0	40.0	37.5	20.3	1.2	37	15	140	4.8	25.1
40.0	42.0	60.0	45.0	37.5	20.3	1.2	37	15	140	4.2	28.7
25.0	57.5	45.0	30.0	52.5	20.3	1.2	17	28	280	12.5	9.6
30.0	57.5	45.0	30.0	52.5	20.3	1.2	17	28	280	10.4	11.5
35.0	57.5	50.0	35.0	52.5	20.3	1.2	17	28	280	8.9	13.5
40.0	57.5	50.0	35.0	52.5	20.3	1.2	17	28	280	7.8	15.4
45.0	57.5	55.0	45.0	52.5	20.3	1.2	17	28	280	6.9	17.3
50.0	57.5	55.0	45.0	52.5	20.3	1.2	17	28	280	6.2	19.2
55.0	57.5	55.0	45.0	52.5	20.3	1.2	17	28	280	5.7	21.1
60.0	57.5	65.0	45.0	52.5	20.3	1.2	17	28	280	5.2	23.1
65.0	57.5	65.0	45.0	52.5	20.3	1.2	17	28	280	4.8	25.0
70.0	57.5	65.0	45.0	52.5	20.3	1.2	17	28	280	4.5	26.9

■ 外形尺寸 Dimensions (mm)

U _{N, 85°C} =1100Vdc											
C _N (μF)	W±1.0 (mm)	H±1.0 (mm)	T±1.0 (mm)	P±0.5 (mm)	b±0.5 (mm)	d±0.05 (mm)	dV/dt (V/μs)	tan δ (10 ⁻⁴)		R _{esr} @10kHz (mΩ)	I _{max} (A)
								1kHz	10kHz		
0.68	32.0	20.0	11.0	27.5	-	0.8	80	8	70	80.0	1.7
1.0	32.0	20.0	11.0	27.5	-	0.8	80	8	70	59.4	2.2
1.5	32.0	22.0	13.0	27.5	-	0.8	80	8	70	55.7	2.4
2.0	32.0	25.0	14.0	27.5	-	0.8	80	8	70	27.9	4.7
3.0	32.0	30.0	18.0	27.5	-	0.8	80	8	70	20.4	6.5
4.0	32.0	33.0	18.0	27.5	-	0.8	80	8	70	15.3	8.6
5.0	32.0	37.0	22.0	27.5	-	0.8	80	8	70	14.0	9.8
5.0	32.0	37.0	22.0	27.5	10.2	0.8	80	8	70	12.3	10.8
6.0	32.0	37.0	22.0	27.5	-	0.8	80	8	70	12.3	10.8
6.0	32.0	37.0	22.0	27.5	10.2	0.8	80	8	70	10.2	12.9
3.0	41.5	30.0	16.0	37.5	-	1.0	40	15	130	48.3	2.5
4.0	41.5	30.0	16.0	37.5	-	1.0	40	15	130	36.2	3.3
4.7	41.5	34.0	19.0	37.5	-	1.0	40	15	130	30.8	3.9
5.0	41.5	34.0	19.0	37.5	-	1.0	40	15	130	29.0	4.1
6.0	41.5	34.0	19.0	37.5	-	1.0	40	15	130	24.2	5.0
7.0	42.0	40.0	20.0	37.5	10.2	1.0	40	15	130	20.7	5.8
8.0	42.0	37.0	22.0	37.5	10.2	1.0	40	15	130	18.1	6.6
9.0	42.0	37.0	22.0	37.5	10.2	1.0	40	15	130	16.1	7.5
10.0	42.0	44.0	24.0	37.5	10.2	1.0	40	15	130	14.5	8.3
12.0	42.0	44.0	24.0	37.5	10.2	1.0	40	15	130	12.1	9.9
15.0	42.0	45.0	30.0	37.5	20.3	1.2	40	15	130	9.7	12.4
18.0	42.0	50.0	35.0	37.5	20.3	1.2	40	15	130	8.1	14.9
20.0	42.0	50.0	35.0	37.5	20.3	1.2	40	15	130	7.2	16.6
25.0	42.0	55.0	40.0	37.5	20.3	1.2	40	15	130	5.8	20.7
30.0	42.0	60.0	45.0	37.5	20.3	1.2	40	15	130	4.8	24.8
20.0	57.5	45.0	30.0	52.5	20.3	1.2	20	27	260	14.5	8.3
25.0	57.5	50.0	35.0	52.5	20.3	1.2	20	27	260	11.6	10.4
30.0	57.5	50.0	35.0	52.5	20.3	1.2	20	27	260	9.7	12.4
35.0	57.5	55.0	45.0	52.5	20.3	1.2	20	27	260	8.4	14.3
40.0	57.5	55.0	45.0	52.5	20.3	1.2	20	27	260	7.8	15.5
45.0	57.5	55.0	45.0	52.5	20.3	1.2	20	27	260	6.9	17.4
50.0	57.5	65.0	45.0	52.5	20.3	1.2	20	27	260	6.2	19.3
55.0	57.5	65.0	45.0	52.5	20.3	1.2	20	27	260	5.6	21.3

■ 外形尺寸 Dimensions (mm)

U _{N, 85°C} =1200Vdc											
C _N (μF)	W±1.0 (mm)	H±1.0 (mm)	T±1.0 (mm)	P±0.5 (mm)	b±0.5 (mm)	d±0.05 (mm)	dV/dt (V/μs)	tan δ (10 ⁻⁴)		R _{esr} @10kHz (mΩ)	I _{max} (A)
								1kHz	10kHz		
1.0	32.0	20.0	11.0	27.5	-	0.8	90	7	55	39.5	3.5
2.0	32.0	28.0	14.0	27.5	-	0.8	90	7	55	26.3	5.0
3.0	32.0	30.0	18.0	27.5	-	0.8	90	7	55	17.5	7.5
4.0	32.0	33.0	18.0	27.5	-	0.8	90	7	55	13.9	9.5
5.0	32.0	37.0	22.0	27.5	-	0.8	90	7	55	12.7	10.4
5.0	32.0	37.0	22.0	27.5	10.2	0.8	90	7	55	11.1	11.8
3.0	41.5	30.0	16.0	37.5	-	1.0	45	13	100	37.2	3.2
4.0	41.5	30.0	16.0	37.5	-	1.0	45	13	100	27.9	4.3
5.0	41.5	34.0	19.0	37.5	-	1.0	45	13	100	22.3	5.4
6.0	42.0	40.0	20.0	37.5	-	1.0	45	13	100	18.6	6.5
7.0	42.0	37.0	22.0	37.5	10.2	1.0	45	13	100	15.9	7.5
8.0	42.0	44.0	24.0	37.5	10.2	1.0	45	13	100	13.9	8.6
9.0	42.0	44.0	24.0	37.5	10.2	1.0	45	13	100	12.4	9.7
10.0	42.0	44.0	24.0	37.5	10.2	1.0	45	13	100	11.1	10.8
12.0	42.0	45.0	30.0	37.5	20.3	1.2	45	13	100	9.3	12.9
15.0	42.0	50.0	35.0	37.5	20.3	1.2	45	13	100	7.4	16.1
18.0	42.0	50.0	35.0	37.5	20.3	1.2	45	13	100	6.6	18.1
20.0	42.0	55.0	40.0	37.5	20.3	1.2	45	13	100	6.0	20.1
25.0	42.0	60.0	45.0	37.5	20.3	1.2	45	13	100	4.8	25.1
15.0	57.5	45.0	30.0	52.5	20.3	1.2	23	24	200	15.9	7.5
20.0	57.5	45.0	30.0	52.5	20.3	1.2	23	24	200	11.9	10.0
25.0	57.5	55.0	45.0	52.5	20.3	1.2	23	24	200	9.6	12.6
30.0	57.5	55.0	45.0	52.5	20.3	1.2	23	24	200	8.0	15.1
35.0	57.5	55.0	45.0	52.5	20.3	1.2	23	24	200	6.8	17.6
40.0	57.5	65.0	45.0	52.5	20.3	1.2	23	24	200	6.0	20.1
45.0	57.5	65.0	45.0	52.5	20.3	1.2	23	24	200	5.3	22.6